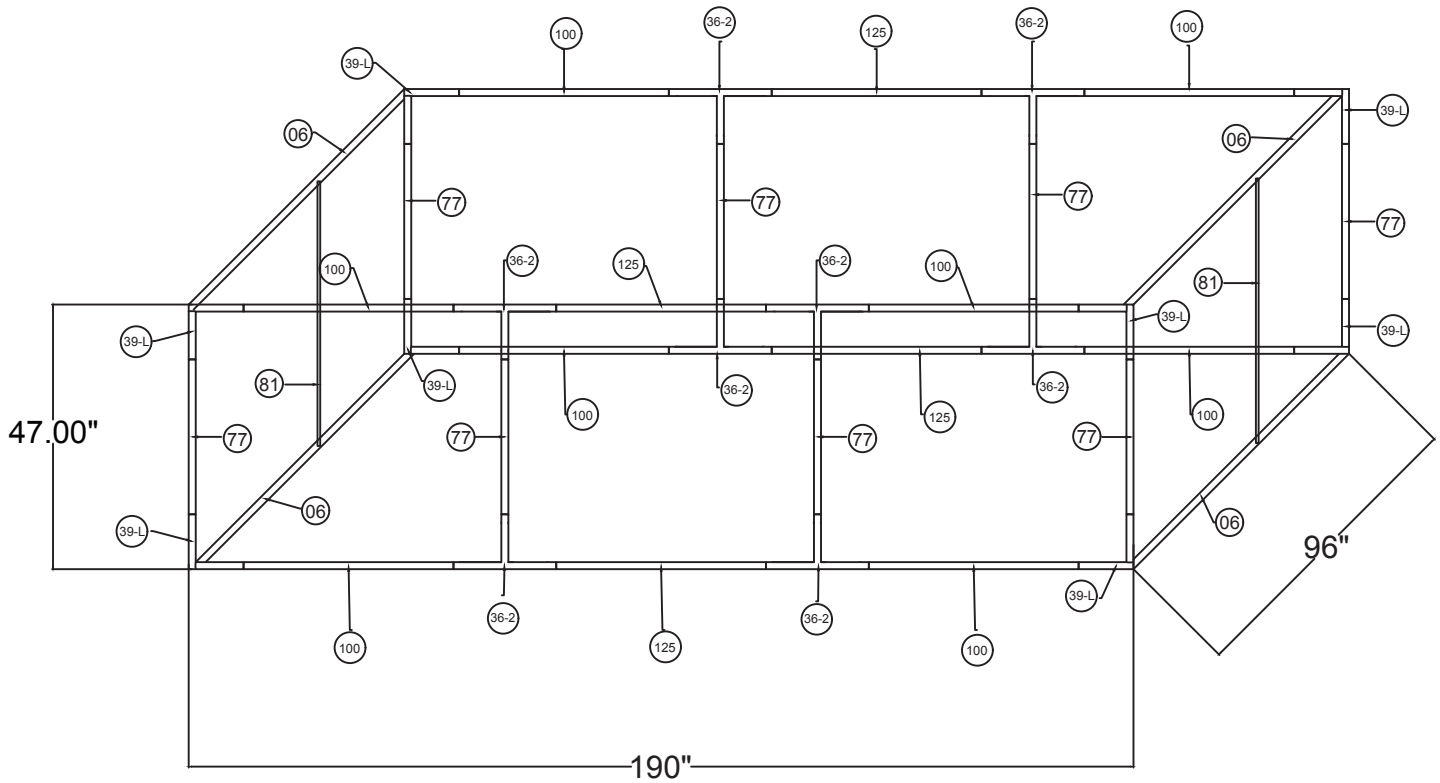


# WAVELINE®

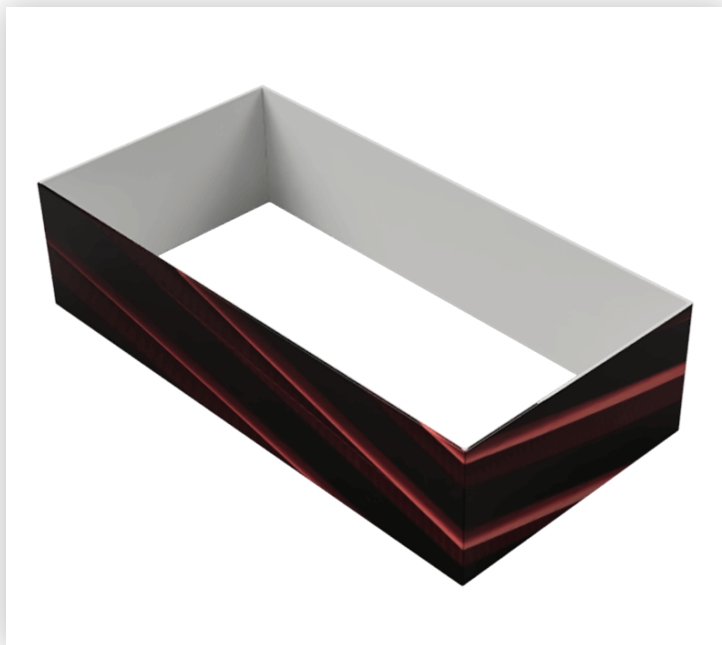
## 16'w x 4'h WL Hanging Sign



### RHS1648

16'L x 8'w x 4'h Rectangular Hanging Sign

| Qty. | Part Number       |
|------|-------------------|
| 8    | WLM#039L-US       |
| 8    | WLM#077           |
| 8    | WLM#100           |
| 4    | WLM#125           |
| 8    | WLM#036-2-US      |
| 2    | WLM#081           |
| 4    | WLM#006           |
| 2    | BGO-FABRIC-XL bag |

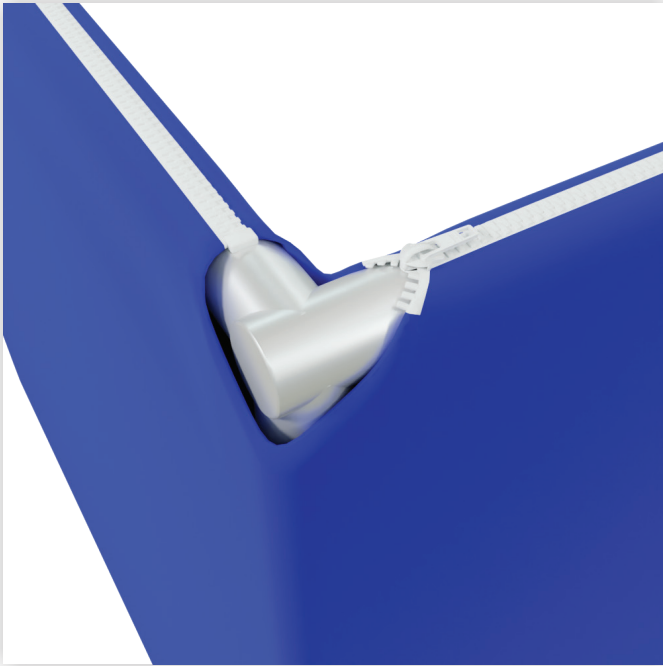


#### Notes:

- \* Does not include Hanging Cables
- \* will fit inside CA600 or CA900 case

# WAVELINE®

## Hanging Sign Rigging Instructions



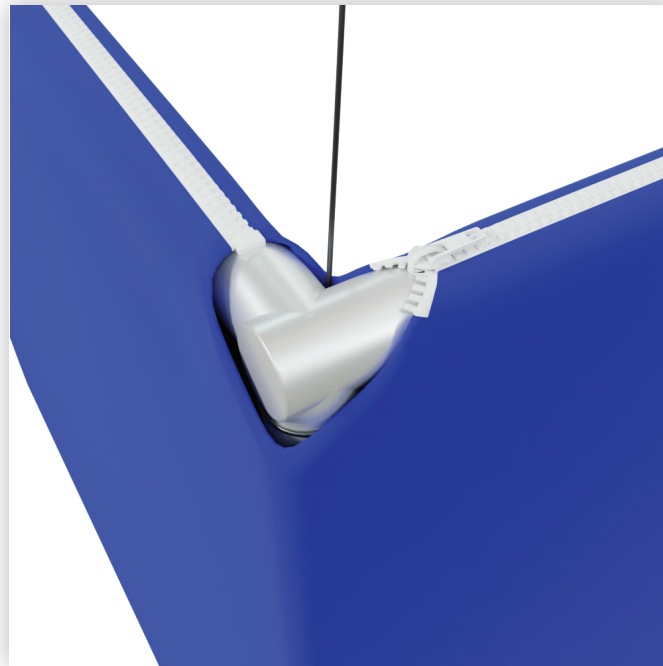
### Step 1

After assembling the sign, locate the hanging points. There are openings on the zipper to allow for cables to be inserted



### Step 2

Open the zippers to expose the hanging area, then wrap the cables around the vertical support pole



### Step 3

Pull the cable through the opening in the fabric. Close the zippers.

\*Hanging cables are not included in the kit, to be provided by on-site rigging team.